

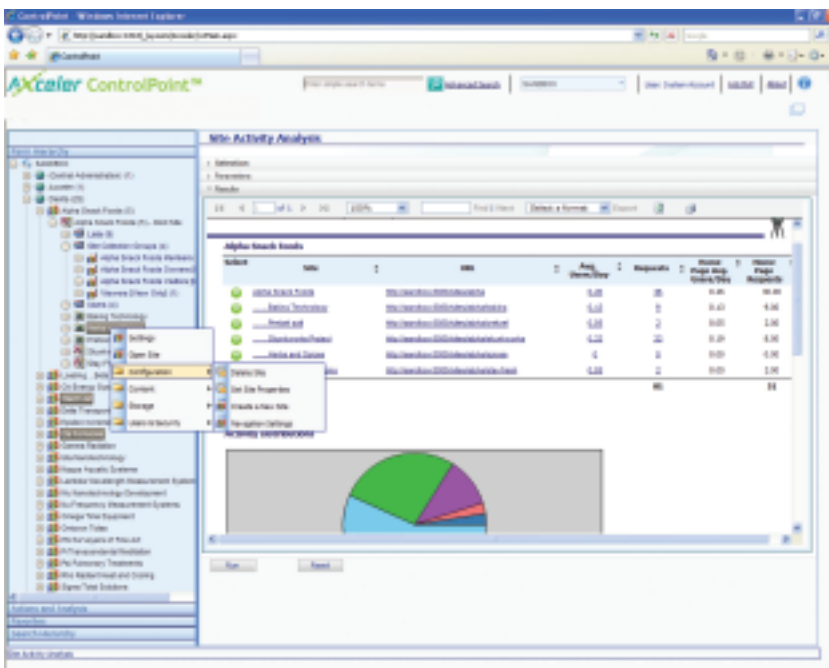


## ControlPoint—Explore, Protect, Analyze and Control

IT departments are embracing Microsoft SharePoint™ as a way to solve a host of business collaboration challenges. However, SharePoint farms can quickly become difficult to manage, as sites proliferate and become a nightmare for administrators. According to an article in CMS Watch, “Unfortunately, as you grow very large SharePoint environments, the controls that enterprises would want to see simply don’t exist natively within the platform.” Some of the most common challenges administrators face today include: no visibility into the performance of your SharePoint environment against your governance policies, poorly managed permissions leading to security gaps, uncontrolled growth of sites and site collections, limited visibility into user activity, depleted or poorly utilized SharePoint resources, and the need to centrally control users, sites, and site collections.

### Introducing Axceler ControlPoint

Axceler ControlPoint gives you the ability to explore, protect, analyze and control your SharePoint environment and helps you measure the performance of your SharePoint environment against your governance policies. Axceler ControlPoint includes comprehensive permissions management, in-depth activity and storage analysis, and SharePoint policy enforcement. Axceler ControlPoint also gives you more control over the configuration and deployment of your SharePoint environment and you can manage content databases, features, and SharePoint groups. With Axceler ControlPoint, you have the ability to monitor the growth of your SharePoint sites and perform trend analysis on key metrics that matter to you. You can even move/copy sites within farms or between farms. Finally, Axceler ControlPoint enables you to be proactive about your SharePoint management with detailed alerts, and scheduled reports.



### CONTROLPOINT BENEFITS

- More control over the configuration and deployment of your SharePoint environment
- Ensure SharePoint security is properly set through permissions management, making sure that only the right eyes see the right content
- Quickly identify sites that do not comply with your governance policies so you can correct them
- Move/copy sites, site collections, lists and libraries within your farm or across farms
- Proactively manage your environment with alerts and scheduled analysis and actions
- Easily navigate to sites and perform any action or analysis
- Security trimmed architecture allows administrators to manage sites while only seeing what SharePoint permissions allow

*“With Axceler ControlPoint, I know about any changes in my environment immediately,” said Karen Floyd, City of Charlotte, NC. “Now I can react appropriately before problems can fester.”*

*“The ability to move sites is critical for us,” said Mike Herrity, Twynham Schools. “We often move content across departments or from test to production environments, so this will save us a huge amount of SharePoint administration time.”*

Since 1994, Axceler has helped enterprises address common yet critical administrative and development challenges, so organizations can maximize collaborative technology investments, improve business operations, and dramatically reduce administrative time and costs. For Microsoft SharePoint, Axceler delivers ControlPoint, which gives administrators the ability to explore, protect, analyze, and ultimately control their SharePoint environments. With ControlPoint, you can analyze and enforce permissions, clean up user accounts, isolate sites that are no longer needed, identify sites with the most or least activity, anticipate site growth, and more.



#### AXCELER

##### Corporate Headquarters

600 UNICORN PARK DRIVE  
WOBURN, MA 01801  
TOLL FREE: 866.499.7092  
TEL: 781.995.0063  
FAX: 781.287.0180

##### European Headquarters

7 SWALLOW PLACE  
LONDON  
W1B 2AG  
UNITED KINGDOM  
TEL: +44 (0)20.7850.0199  
FAX: +44 (0)20.7850.0270  
www.axceler.com  
questions@Axceler.com

## Capabilities & Features

### Manage Permissions

- Perform a complete security analysis across your farm even down to the document level
- Set, delete, reassign, or duplicate user permissions
- Backup and restore permissions
- Manage SharePoint groups
- Clean up users who are no longer in Active Directory but are still in SharePoint
- Duplicate site permissions
- Monitor SharePoint CALs

### Interactive Analysis and Reporting

- Interactive analysis, not just predefined or static reports
- Drill down or drill across to gain more detailed information
- Compare historic patterns and trends to better plan out your future requirements
- In-depth analysis and control of SharePoint Audit and Change logs

### Analyze Usage and Activity

- Analyze activity down to the site, page, or document level
- Identify who is accessing which documents, including details on that activity (i.e. checking in a document, editing a document, or just viewing a document's properties)
- Isolate sites that are no longer needed and delete them
- Compare activity from the past to help anticipate the future
- Find sites with the most or least activity

### Manage Content and Storage

- Monitor and track the growth of sites for better planning
- Analyze web part usage to determine which sites are using which web parts
- Management and control of SharePoint features
- Ensure consistent branding and behavior: site themes, quotas, regional settings, etc.

### Proactive Management

- Automatic alerts to critical changes in your environment
- Know immediately when a site is added or deleted or a site's permission settings changes
- Enforce policies to maintain standards
- Schedule any analysis or action

### Move or Copy Content within Farms or Across Farms

- Move site collections, sites, lists, libraries, folders, and items
- Quickly go from test environment to production environment
- Reorganize your content as part of an architecture change, business change, or unanticipated growth

## Smarter Infrastructure

### Efficient SharePoint Management

- Manage and control multiple sites, site collections, and web applications from one central location
- Lets administrators quickly and easily find sites to act upon
- Increase productivity with cross-site navigation and farm-wide administration
- Perform discovery/search functions across your SharePoint farm
- Scale to 10's of thousands of sites
- Avoid training hassles with easy to use, consistent user interface

### Find it and Fix it

- Analyze and then act immediately on results
- Avoid losing your context by switching between modules

### Security Trimmed

- No additional security infrastructure to manage
- Leverage the security model you've already implemented in SharePoint

### Distributed SharePoint Management

- Limit administrative functionality available to business managers or lower level administrators
- Option to integrate all management actions into SharePoint Site Settings
- Run reports from outside of ControlPoint to share with others
- Expose critical information in dashboards

### Integrated with SharePoint

- Installs into your farm as a browser based web application
- Easily navigate to any site, site collection, or web application from within ControlPoint
- Access any SharePoint administrative capabilities like Site Settings and Central Administration from within ControlPoint

## System Requirements

ControlPoint runs within your SharePoint environment on systems that meet the following requirements: Windows Server 2003, 2008, with IIS activated, SharePoint 2007 with WSS 3.0 installed (MOSS is optional), and SQL Server 2005, 2008. Supports IE 6, 7 & 8.